

# Darrington

IGA



**CHUCK  
SHOULDER  
POT ROAST**

Boneless, USDA Choice

**5<sup>49</sup>/<sub>lb</sub>**



**LEAN GROUND  
BEEF**

80/20, ValuPak

**4<sup>49</sup>/<sub>lb</sub>**



**BABY BACK  
RIBS**

**3<sup>29</sup>/<sub>lb</sub>**



**CHUCK  
SHOULDER STEAK**

USDA Choice, ValuPak

**5<sup>99</sup>/<sub>lb</sub>**



**FRESH CHICKEN  
HIND QUARTERS**

ValuPak

**99¢  
lb**



**FRESH SMOKED OYSTERS**

3 oz. Assorted Flavors

**6<sup>99</sup>/<sub>ea</sub>**



**BONE-IN PORK  
SHOULDER  
ROAST**

**1<sup>99</sup>/<sub>lb</sub>**



**PORK SHOULDER  
STEAK**

ValuPak

**2<sup>49</sup>/<sub>lb</sub>**



**GREAT  
AMERICAN  
SEAFOOD  
MEAL KITS**

24 oz. Assorted Flavors

**10<sup>99</sup>/<sub>ea</sub>**



**GREAT  
AMERICAN  
SEAFOOD  
TILAPIA FILLETS**

3 lb. Bag

**14<sup>99</sup>/<sub>ea</sub>**



**GREAT AMERICAN  
SEAFOOD  
26/30 LARGE  
SHRIMP**

2 lb. Bag, Peeled & Deveined, Tail-Off

**14<sup>99</sup>/<sub>ea</sub>**



**FRESH  
TRUE COD  
FILLETS**

**8<sup>99</sup>/<sub>lb</sub>**



**FRESH NW  
CAUGHT  
STEELHEAD  
FILLETS**

**12<sup>99</sup>/<sub>lb</sub>**

1090 Seemen Street  
Darrington, WA 98241



PRICES VALID APRIL 2ND, 2025 - APRIL 8TH, 2025 WHILE SUPPLIES LAST  
WE RESERVE THE RIGHT TO LIMIT QUANTITIES. SOME ITEMS MAY NOT BE AVAILABLE.  
OFFERS NOT AVAILABLE TO WHOLESALERS. NO CASE DISCOUNTS.



**COSMIC CRISP,  
FUJI & GALA  
APPLES**

**1<sup>79</sup>/<sub>lb</sub>**



**RED & GREEN  
GRAPES**

**2<sup>99</sup>/<sub>lb</sub>**



**CELERY  
BUNCH**

**99¢  
ea**



**BI-COLOR  
CORN**

**5/\$5**



**BELL PEPPERS  
RED, YELLOW,  
& ORANGE**

**2/\$3**



**ON THE VINE  
TOMATOES**

**1<sup>99</sup>/<sub>lb</sub>**



**YELLOW  
ONIONS**

**59¢  
lb**



**RED OR YELLOW  
POTATOES**

**99¢  
lb**



**WHOLE  
ROASTED  
CHICKEN**

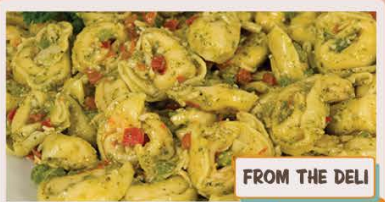
Hot or Cold

**FROM THE DELI**  
**8<sup>99</sup>/<sub>ea</sub>**



**KRETSCHMAR  
SLICED CHICKEN**

**FROM THE DELI**  
**11<sup>99</sup>/<sub>lb</sub>**



**DELI FRESH  
TORTELLINI PESTO  
SALAD**

**FROM THE DELI**  
**9<sup>99</sup>/<sub>lb</sub>**



**GONNELLA  
PRETZEL  
BUNS**

12 oz. Assorted Varieties

**FROM THE BAKERY**  
**4<sup>99</sup>/<sub>ea</sub>**



**FRESH  
BAKED  
TURNOVERS**

4 ct. Assorted Varieties

**FROM THE BAKERY**  
**5<sup>49</sup>/<sub>ea</sub>**



**INCLINE  
IMPERIAL  
CIDER**

selected varieties 6pks

**11<sup>99</sup>/<sub>ea</sub>**



**SEAPINE  
BREWING**

selected varieties 6pks

**11<sup>99</sup>/<sub>ea</sub>**



**KONA BREWING &  
ATHLETIC BREWING N/A**

selected varieties 6pks

**10<sup>99</sup>/<sub>ea</sub>**



**COORS BANQUET,  
COORS LIGHT  
& MILLER LITE**

18pk, 12 oz cans

**19<sup>99</sup>/<sub>ea</sub>**



750 ml

**14<sup>99</sup>/<sub>ea</sub>**



1.75 liter

**15<sup>99</sup>/<sub>ea</sub>**



750 ml select varieties

**15<sup>99</sup>/<sub>ea</sub>**



750 ml select varieties

**8<sup>99</sup>/<sub>ea</sub>**



750 ml

**8<sup>99</sup>/<sub>ea</sub>**



750 ml select varieties

**12<sup>99</sup>/<sub>ea</sub>**



select varieties

**9<sup>99</sup>/<sub>ea</sub>**

**SAVE 10%  
ON WINE**  
with the purchase  
of 6 bottles of  
wine or more!



750 ml

**22<sup>99</sup>/<sub>ea</sub>**



750 ml

**19<sup>99</sup>/<sub>ea</sub>**

**PRICES VALID APRIL 2ND, 2025 - APRIL 8TH, 2025 WHILE SUPPLIES LAST  
WE RESERVE THE RIGHT TO LIMIT QUANTITIES. SOME ITEMS MAY NOT BE AVAILABLE.  
OFFERS NOT AVAILABLE TO WHOLESALERS. NO CASE DISCOUNTS.**

**FRANZ 1906 BREAD**  
24 oz. select varieties  
**1<sup>19</sup> ea**

**FRANZ CLASSIC BUNS**  
8 ct. select varieties  
**2<sup>99</sup> ea**

**FRANZ DINNER ROLLS**  
12 ct. select varieties  
**3<sup>49</sup> ea**

**FRANZ BAGELS**  
6 ct. select varieties  
**3<sup>49</sup> ea**

**COKE 24-PACKS**  
12 oz. can, select varieties  
**12<sup>99</sup> ea**

**PEPSI 24-PACKS**  
12 oz. can, select varieties  
**11<sup>99</sup> ea**

**LAY'S CHIPS**  
7-10 oz. select varieties  
**3<sup>49</sup> ea**

**IGA CHEESE**  
8 oz. select varieties  
**2/\$4**

**TILLAMOOK YOGURT**  
6 oz. select varieties  
**79¢ ea**

**INTERNATIONAL DELIGHT CREAMER**  
32 fl. oz. select varieties  
**3<sup>99</sup> ea**

**IGA BUTTER**  
16 oz.  
**2<sup>99</sup> ea**

**BAYS ENGLISH MUFFINS**  
12 oz.  
**2<sup>99</sup> ea**

**JELL-O 4-PACKS**  
12.5 - 15.5 oz. select varieties  
**2<sup>99</sup> ea**

**DREYER'S ICE CREAM**  
48 fl. oz. select varieties  
**3<sup>99</sup> ea**

**BEN & JERRY'S ICE CREAM**  
15.2 - 16 fl. oz. select varieties  
**5<sup>49</sup> ea**

**POPSICLE**  
12.1 - 29.7 fl. oz. select varieties  
**5<sup>49</sup> ea**

**MARIE CALLENDER'S PIES**  
25 - 42 oz. select varieties  
**5<sup>99</sup> ea**

**OLD ORCHARD JUICE**  
12 fl. oz. select varieties  
**2/\$4**

**BANQUET FROZEN MEALS**  
8.5 - 11.88 oz. select varieties  
**1<sup>79</sup> ea**

**HUNGRY MAN FROZEN MEALS**  
13 - 16 oz. select varieties  
**3<sup>99</sup> ea**

**GROWN IN IDAHO POTATOES**  
28 oz. select varieties  
**4<sup>99</sup> ea**

**MAXWELL HOUSE COFFEE**  
24.5 - 27.9 oz. select varieties  
**9<sup>99</sup> ea**

**FRANK'S HOT SAUCE**  
12 fl. oz. select varieties  
**3<sup>99</sup> ea**

**NABISCO CRACKERS**  
11.5 - 14 oz. select varieties  
**4<sup>49</sup> ea**

**KEEBLER PIE CRUST**  
4 - 6 oz. select varieties  
**2<sup>99</sup> ea**

**DOLE FRUIT CUPS**  
4-pk select varieties  
**2<sup>99</sup> ea**

**LANGERS JUICE**  
64 fl. oz. select varieties  
**2<sup>99</sup> ea**

**CLAMATO**  
32 fl. oz. select varieties  
**2<sup>99</sup> ea**

**NO YOLKS NOODLES**  
12 oz. select varieties  
**2<sup>99</sup> ea**

**NALLEY CHILI**  
14 oz. select varieties  
**2/\$5**

**PACE SALSA**  
16 oz. select varieties  
**2<sup>79</sup> ea**

**BEST FOODS MAYO**  
30 fl. oz. select varieties  
**7<sup>49</sup> ea**

**CHIPS AHOY! COOKIES**  
9.58 - 19.5 oz. select varieties  
**4<sup>49</sup> ea**

**IGA TOMATOES**  
14.5 - 15 oz. select varieties  
**4/\$5**

**IGA INSTANT RICE**  
14 oz.  
**1<sup>99</sup> ea**

**CREST TOOTH PASTE**  
5.7 oz. select varieties  
**2/\$4**

**TAMPAX**  
32 - 36 ct. select varieties  
**8<sup>99</sup> ea**

**FEBREEZE**  
8.8 oz. select varieties  
**3<sup>49</sup> ea**

**MR. CLEAN CLEANER**  
16 fl. oz. select varieties  
**4<sup>99</sup> ea**

**CHARMIN BATH TISSUE**  
143 - 146 sf. select varieties  
**8<sup>99</sup> ea**

**BOUNTY PAPER TOWELS**  
147 - 199 sf. select varieties  
**8<sup>99</sup> ea**

PRICES VALID APRIL 2ND, 2025 - APRIL 8TH, 2025 WHILE SUPPLIES LAST  
WE RESERVE THE RIGHT TO LIMIT QUANTITIES. SOME ITEMS MAY NOT BE AVAILABLE.  
OFFERS NOT AVAILABLE TO WHOLESALERS. NO CASE DISCOUNTS.